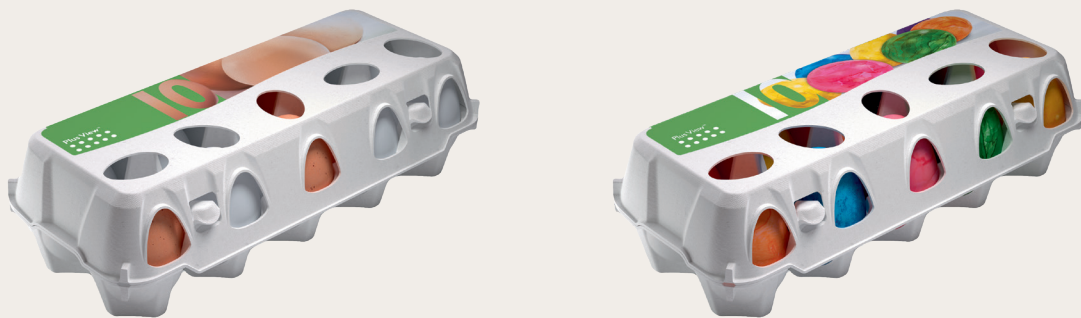


# 1x10 Plus View™ E1B10

## Product range



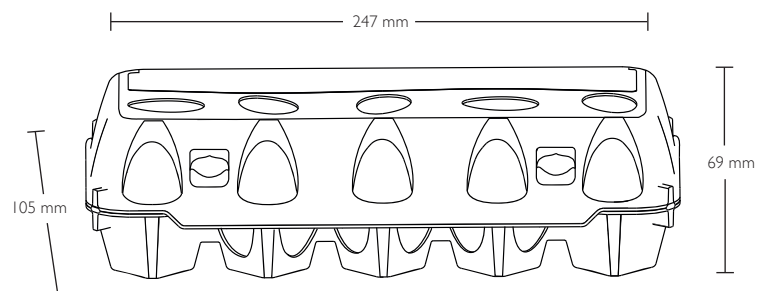
Label

## Egg sizes

Our E1B10 egg cell is constructed for weight classes S, M, L

## Product dimensions (closed) \*

Width: 105 mm  
Height: 69 mm  
Length: 247 mm



## Colours \*

Standard colours 20 stone grey

Subject to changes.

# 1x10 Plus View™ E1B10

## Average product weight \*

With label: 35.7 g

## Quantities

Pallet: 44A one way

Units per bundle: 67

Units per pallet: 4,690

## Machine settings

**Moba Code: HA1010**

Gripper Set No.: 162

Denester settings:

**Sime-Tek Code: 1B10**

Denester settings:

**Sanovo Code (Staalkat): HA0070**

L	G	J	II	I2	A	B	C	D
12	12	26	17	36	250	7	88	142

**Bergmeier**  
for some Bergmeier machines a new closing bar is required in certain cases (star packer).

**Disclaimer:** Please consult MOBA, SANOVO, SIME-TEK or Bergmeier for confirmation of the machine settings

## Decorations

### Label:

CMYK and up to 2 spot colours on request



Modules for labels can be downloaded at [hartmann-packaging.com](http://hartmann-packaging.com)

## Certification



## Certification (optional)



\* Colours, weights and dimensions of the products may differ due to the nature of the material, moist variations, production variations, storage and transport conditions.